

# Print Base: BLOCKOUT

Elegant blackout woven construction with 98% light resistance

Composition: 100% polyester face.  
Printed width: 140 cms | 55 inches  
Weight: 250 g/m<sup>2</sup> | 7.37 oz/yd<sup>2</sup>  
Recommended usage: Commercial and residential drapery | Can be printed both sides

## PERFORMANCE

Fire rating: AS 1530.3 [DOWNLOAD](#)

Colourfastness to light:  
Test Standard ISO-BO2-1994 (Range across CMYK colours)

Rating 5 - 6/7

Colourfastness to washing:  
Test Standard AS2001.4.15-2006 (Range across CMYK colours)

Rating 5

Colourfastness to drycleaning:  
Test Standard AS2001.4.15-2006 (Range across CMYK colours)

Rating 4 - 4/5

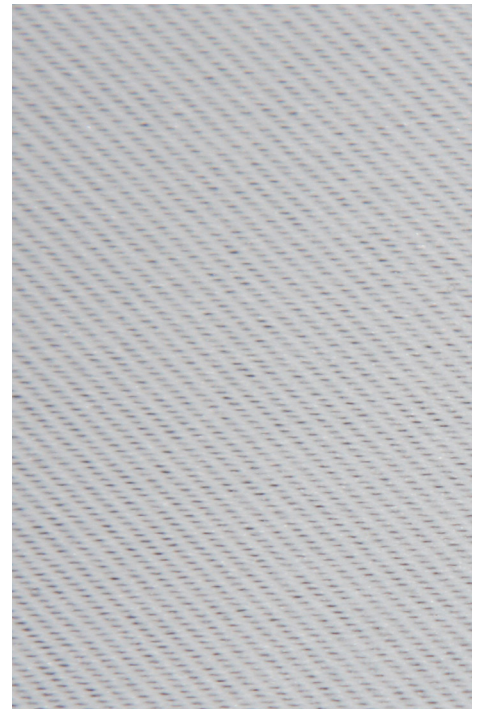
Colourfastness to rubbing:  
Test Standard AS2687 - 1997 Class 4

Wet 4/5 Dry 5

## CARE & MAINTENANCE

Machine washable at 30 degrees  
Iron on medium heat  
Tumble dry on low

Only use textile detergents  
Use professional cleaners for best results



**Sustainable  
Green Print**  
✓ ✓ ✓ ✓

## SUSTAINABILITY

We strive to follow principles of sustainability through all our business activities and the entire process from weaving to production. We print locally to order and only use water-based inks and recyclable bi-products. We regularly research the latest developments in sustainable textile production to ensure we are using all available innovations to reduce the environmental impact of both our production and products.

M: +61 406 029 232  
E: [patricia@patriciabraune.com](mailto:patricia@patriciabraune.com)  
W: [patriciabraune.com](http://patriciabraune.com)



HIGH PERFORMANCE PRINT BASES