

Print Base: ENDEAVOUR IVY

linen texture face with 3 pass acrylic backing

Composition: 100% polyester face. Acrylic backing
Printed width: 140 cms | 55 inches
Weight: 427 g/m² | 12.57 oz/yd²
Recommended usage: Commercial drapery

PERFORMANCE

Fire rating: AS 1530.3 [DOWNLOAD](#)

Colourfastness to light:
Test Standard ISO-BO2-1994 (Range across CMYK colours)

Colourfastness to washing:
Test Standard AS2001.4.15-2006 (Range across CMYK colours)

Colourfastness to drycleaning:
Test Standard AS2001.4.15-2006 (Range across CMYK colours)

Colourfastness to rubbing:
Test Standard AS2687 - 1997 Class 4

Rating 5 - 6/7

Rating 5

Rating 4 - 4/5

Wet 4/5 Dry 5

CARE & MAINTENANCE

Machine washable at 30 degrees
Iron on medium heat
Tumble dry on low

Only use textile detergents
Use professional cleaners for best results

SUSTAINABILITY

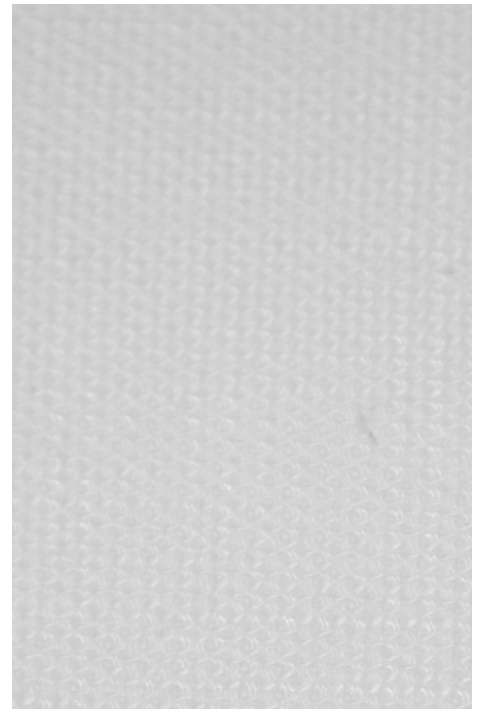
We strive to follow principles of sustainability through all our business activities and the entire process from weaving to production. We print locally to order and only use water-based inks and recyclable bi-products. We regularly research the latest developments in sustainable textile production to ensure we are using all available innovations to reduce the environmental impact of both our production and products.



**Sustainable
Green Print**



M: +61 406 029 232
E: patricia@patriciabraune.com
W: patriciabraune.com



HEALTHCARE PRINT BASES

September 2017